



BRAT IMPLANTS

RESEARCH THROUGH
INNOVATION



WWW.BRAT-IMPLANTS.COM



COMPANY **PROFILE**

The BRAT company was established to carry out research, development and trials on products in order to improve implant and pre-implant procedures (autogenous, allogenic and allographic bone grafts). Our team is made up of practitioners experienced in implantology who have been practicing, as well as teaching in hospital-universities, for more than 25 years. Our expertise, in both clinical practice and

academics, is the cornerstone for our bringing innovation and knowhow to the field of dental implants. BRAT developed the “Implant Express”, a true global implant solution. The solution is designed to allow placing the implant on a previously toothless ridge, even immediately after. Other products currently being developed will gradually be introduced when they are ready out.

CONTENTS

IMPLANT EXPRESS NARROW.....	3
PROSTHETIC COMPONENTS.....	6
DIGITAL ACCESSORIES.....	8
IMPLANT EXPRESS.....	10
DRILLING SEQUENCES.....	13
SURGICAL KIT.....	14
PROSTHETIC COMPONENTS.....	18
CEMENT RETAINED PROSTHESIS.....	20
SCREWED RETAINED PROSTHESIS.....	23
REMOVABLE PROSTHESIS.....	25
DIGITAL ACCESSORIES.....	27
IMPLANT MONO ONE.....	29
BRAT PRODUCTION	32
BRAT & ACADEMICS.....	34
BRAT IMPLANT CLINICAL CASES.....	36
SURGEONS WORLDWIDE TESTIMONIALS.....	43

IMPLANT EXPRESS NARROW



The Implant Express Narrow is made from Grade V titanium alloy Ti 6Al 4V ELI, extremely durable, robust and highly biocompatible material.

The Narrow implant Express by BRAT is mainly used in cases of narrow crests or between two close teeth.
The connection is internal hexagon of 2 mm.

OSTEOTEC® SURFACE TREATMENT

The Implant Express Narrow surface treatment is fully biocompatible and osseointegrative. Our sandblasting (μ blasting) surface treatment, which has proven to achieve the desired roughness levels for optimal osseointegration, attains the highest implant surface purity levels and increases the success rate of Bone to Implant Contact (BIC).

SHAPE AND DESIGN OF THE IMPLANT EXPRESS NARROW

- Rapid insertion into the implant bed
- Excellent primary stability
- Bone condensation which improves bone structure (Type D 3 to Type D 2).

PHYSICAL CHARACTERISTICS

- The rough surface of the implant is entirely threaded.
- Micro-thread at the base of the implant prevents bone loss.
- The thread of the "Implant Express Narrow" is fine and deep, which allows important primary stability when digging into spongy bone.
- Connecting to the implant : the connection area of the Implant
- Express Narrow is a 2mm internal hexagonal connection where the prosthetic abutment and implant lock perfectly.



USABLE IN ALL CLINICAL CASES

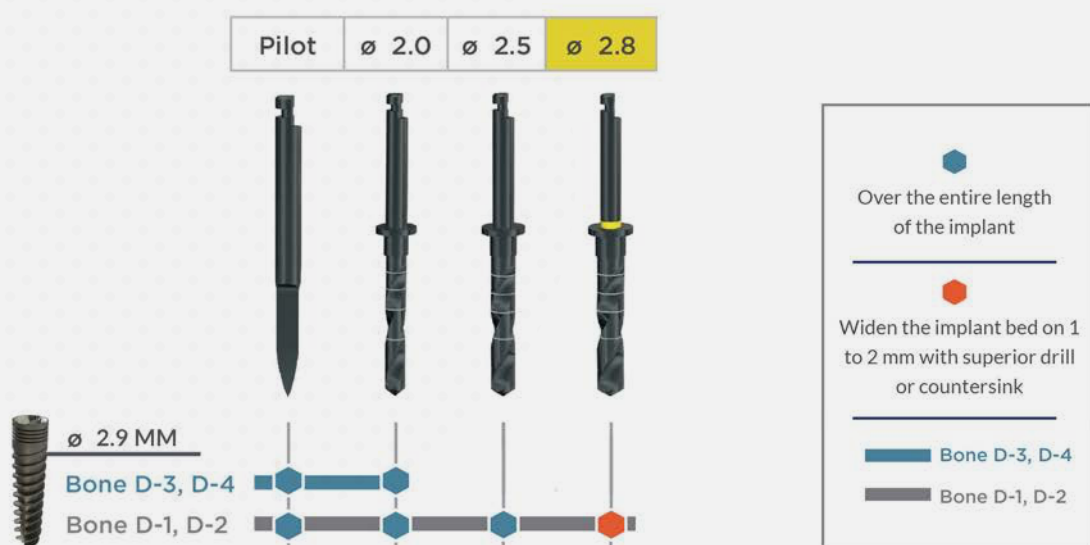
- The Implant Express guarantees safe surgical procedures which are often simplified
- Immediate implant placement, post extraction
- Implant placement possible in jaws with soft bone quality (type 4)
- Immediate loading is possible (excellent primary stability)
- Maxillary and mandibular implant with little bone depth or in sinus floor

IMPLANT EXPRESS NARROW REFERENCES

Length & Diameter of the implant

DIAM.	L 10 MM	L 11,5 MM	L 13 MM	SIZE A	SIZE B
 Ø 2.9 MM	E2910	E2911	E2913	2.95 MM	2.14 MM

SURGERY PROTOCOL



IMPLANT HEXAGONAL DRIVERS

Ref	S0007	S0008
Height	10 mm	15 mm

IMPLANT HEXAGONAL DRIVERS

Ref	CC004	CC005
Length	20 mm	28 mm

PROSTHETIC COMPONENTS



Screw included
with all abutments

V0000

HEALING ABUTMENTS

				
Ref	V0021	V0022	V0023	V0024
Height	2 mm	3 mm	4 mm	5 mm

IMPRESSION COPING / ANALOG

		
Ref	A0003	T0006
Type	Analog	Open tray transfer

STRAIGHT ABUTMENTS

	
Ref	P0051
Height	9 mm

ANGULATED ABUTMENTS

		
Ref	P0052	P0053
Angulation	15°	25°

BALL ATTACHMENTS

			
Ref	P2933	P2934	P2935
Height	1 mm	2 mm	3 mm

DIGITAL ACCESSORIES



exocad

DIGITAL ACCESSORIES

CAD CAM EXOCAD LIBRARY

exocad

SLIM HEX 2.0



Ref

SCANPNC

Scan Body



DAN30H

Digital Analog

TI BASE



Ref

TBASENC

TiBase Hexed



TBASENCM

TiBase non Hexed

IMPLANT EXPRESS

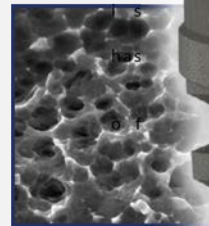


MATERIAL

The Implant Express is made from Grade V titanium alloy Ti 6Al 4V ELI, extremely durable, robust and highly biocompatible material.

OSTEOTEC® SURFACE TREATMENT

The Implant Express surface treatment fully biocompatible and osseointegrative. Our sandblasting (µ blasting) surface treatment, which proven to achieve the desired roughness levels for optimal osseointegration, attains the highest implant surface purity levels and increases the success rate Bone to Implant Contact (BIC).

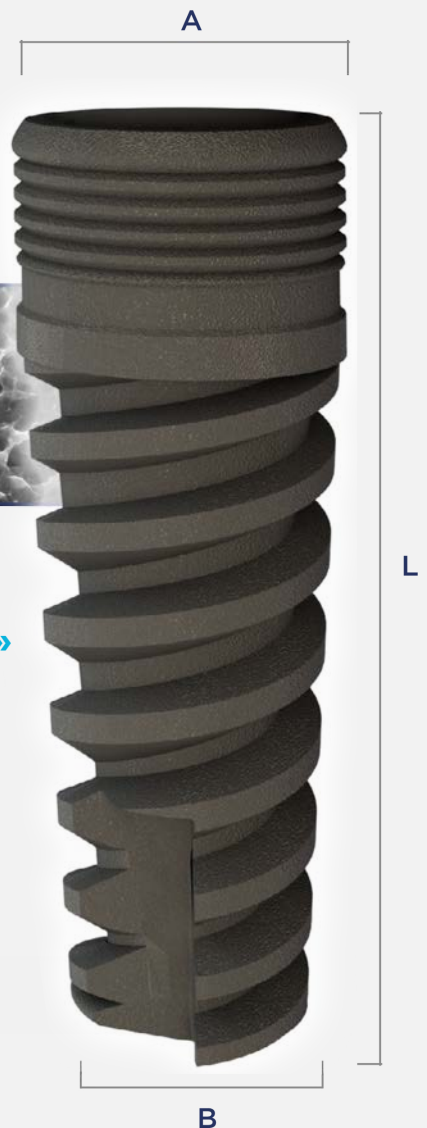


SHAPE AND DESIGN OF THE «IMPLANT EXPRESS»

- Rapid insertion into the implant bed
- Excellent primary stability
- Bone condensation which improves bone structure (Type D 3 to Type D 2).

CHARACTERISTICS OF THE «IMPLANT EXPRESS»

- Trough surface of the implant is entirely threaded.
- Micro-thread at the base of the implant prevents bone loss.
- The thread of the "Implant Express" is fine and deep, which allows important primary stability when digging into spongy bone.
- Connecting to the implant: the connection area of the "Implant Express" is a 2.5mm internal hexa connection, where the prosthetic abutment and implant lock perfectly.







USABLE IN ALL CLINICAL CASES

- The Implant Express guarantees safe surgical procedures which are often simplified
- Immediate implant placement, post extraction
- Implant placement possible in jaws with soft bone quality (type 4)
- Maxillary and mandibular implant with little bone depth or in sinus floor
- Immediate loading is possible (excellent primary stability)

IMPLANT EXPRESS COLOR CODE

Length & Diameter of the implant

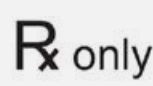
*CF PICTURE P4

	DIAM.	L 8 MM	L 10 MM	L 11,5 MM	L 13 MM	SIZE A	SIZE B
	Ø 3.3	E3308	E3310	E3311	E3313	3.8 MM	3.3 MM
	Ø 3.75	E3708	E3710	E3711	E3713	3.8 MM	3.6 MM
	Ø 4.2	E4208	E4210	E4211	E4213	4.2 MM	3.91 MM
	Ø 5	E0508	E0510	E0511	E0513	5 MM	4.61 MM

ULTRA SAFE PACKAGING

Implant Express is delivered in a safe packaging. The implant is protected by a double sterile barrier, the first one is a inner tube which holds the implant thanks to its silicon joint, the whole is thermo sealed in a blister.

All the informations about the tracability are available from the initial packaging to the blister.



HIGH QUALITY PRODUCTS

BRAT products are CE certified and the Company is certified ISO 13485. BRAT makes a continuous quality control. Strict guidelines apply to the production of the implants, during all the steps of production. Every implant is sterilized, treated with gamma rays and packaged individually inside a sterile tube in a sealed blister.

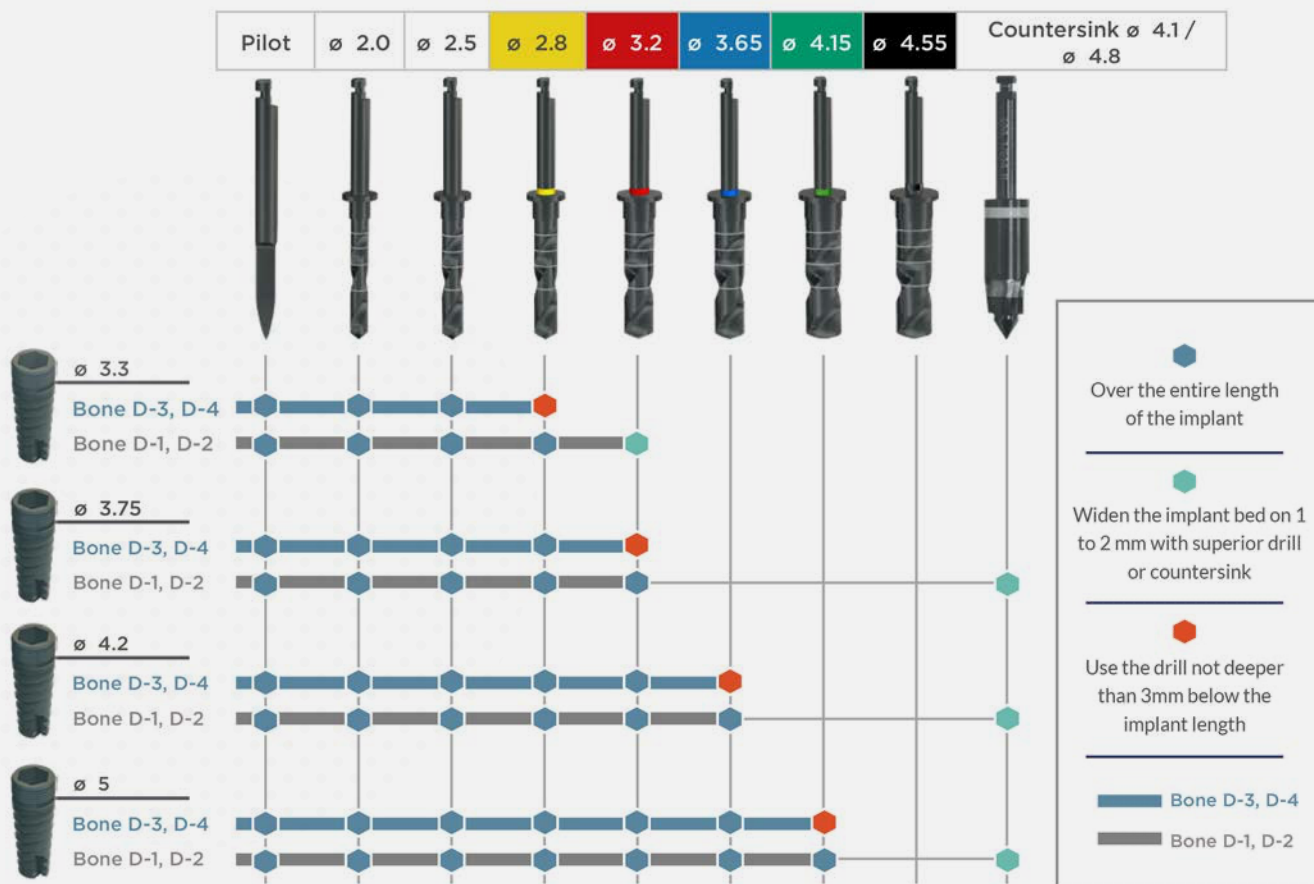
PACKAGING & SECURITY

Then the tube is packaged inside a sealed blister pack. Packaging was studied specifically to avoid risk of contamination during shipling and handling.

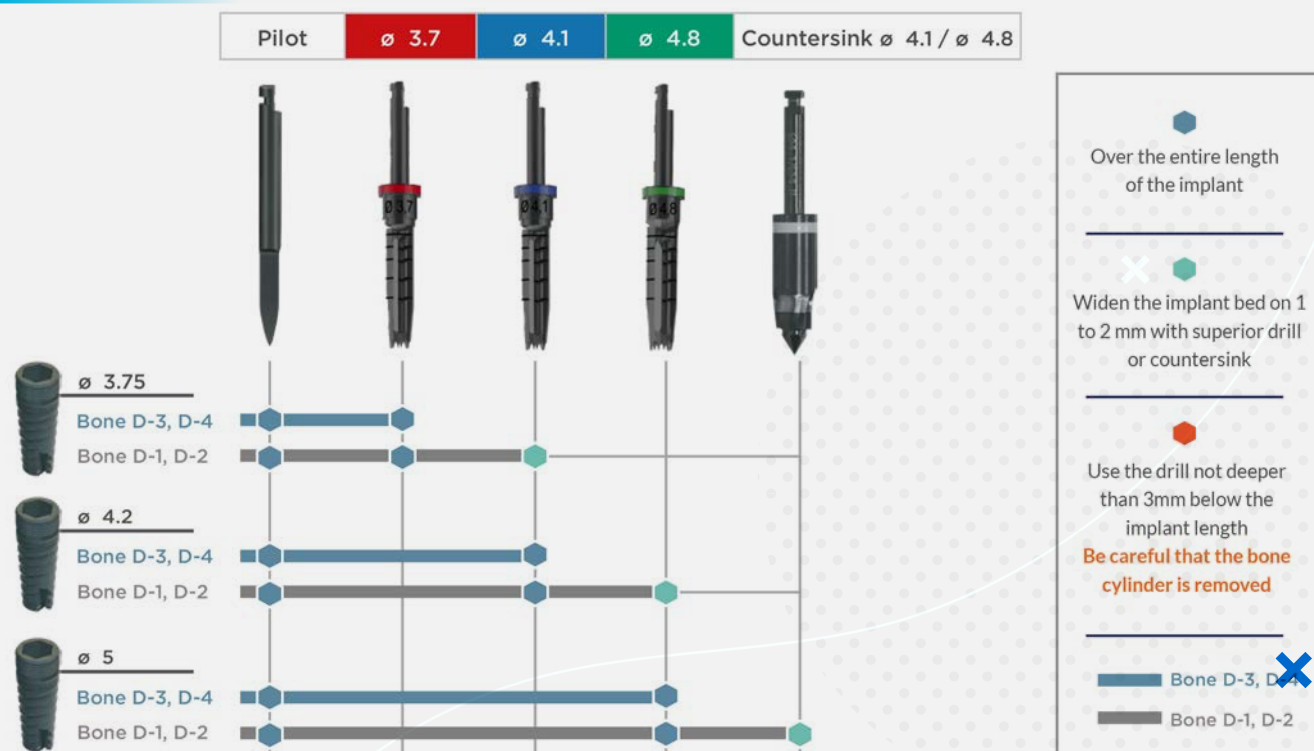
The aim is to maintain our quality policy and the interest of our users and patients. We continually invest in innovation and improve our products.

DRILLING SEQUENCES

CYLINDRICAL DRILLS



TREPHINE DRILLS



SURGICAL KIT



SURGICAL INSTRUMENTS

- A complete implant and prosthetic surgical kit
- 2 different drilling systems : Cylindrical & Trephine drills
- Countersink
- Stoppers for cylindrical & trephine drills
- Extension drill
- 2 parallel pins

- 2 handpiece drivers 2.42 mm
- 2 ratchet hexa drivers 2.42 mm
- 2 ratchet hexa drivers 1.25 mm
- Manual prosthetic driver 1.25 mm
- Ratchet
- Dental pincette
- Implant screwdriver

CYLINDRICAL DRILLS

Cylindrical drills are made with high quality medical grade stainless steel with TIN coated. Each drill has a color code for diameter identification and laser depth marks matching with each length of implant (8mm 10mm 11,5mm 13mm).



TREPHINE DRILLS

Bone recover

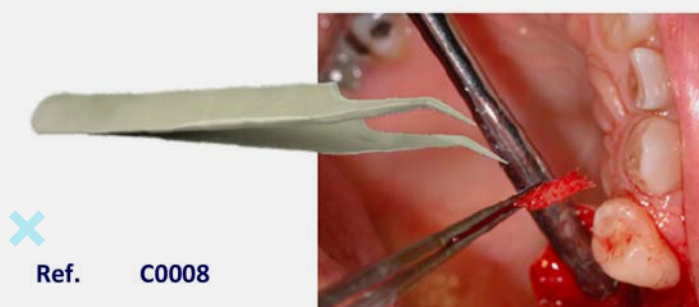
A high quality trephine drill which guarantees precise technique at the implant area, bone recovery and less over heating. The trephine drills are made with medical grade stainless still with TIN coated. Each drill has a color code for diameter identification and laser depth marks matching with each length of implant (8mm 10mm 11,5mm 13mm)

Thanks to optimal on-site bone retrievals, the purchase allogenic bone or bone substitutes is made optional.

INNOVATION



DENTAL PINCETTE



PARALLEL PINS & HANDPIECE DRIVERS



Parallel pin long



Parallel pin short



Long handpiece driver 2.42 mm



Short handpiece driver 2.42 mm

Ref
Length

PA002
16 mm

PA001
10 mm

CC003
28 mm

CC002
20 mm

MANUAL PROSTHETIC DRIVER



Short 1.25 mm



Long 1.25 mm

Ref
Length

S0005
7 mm

S0006
14 mm

TORQUE, RACHET, IMPLANT SCREWDRIVER



► Ratchet



► Torque wrench



► Implant screwdriver

Ref

C0001

C0002

C0003

RATCHET HEXA DRIVERS



► Short 1.25 mm



► Long 1.25 mm



► Short 2.42 mm



► Long 2.42 mm

Ref

S0001

S0002

S0003

S0004

Length

7 mm

15 mm

7 mm

15 mm

PROSTHETIC COMPONENTS



ADVANTAGES OF BRAT PROSTHETIC SYSTEM

- The Implant Express prosthetic system is complete and easy to use.
- The largest choice of prosthetics components.
- All prosthetics components are compatible with the "Implant Express" regardless of length or diameter of the implant.
- Platform switching is possible.
- Error-proof

STANDARD HEALING ABUTMENTS (Ø 3.75 MM - 4.2 MM)

						
Ref	V0001	V0002	V0003	V0004	V0005	V0006
Height	2 mm	3 mm	4 mm	5 mm	6 mm	7 mm

LARGE HEALING ABUTMENTS (Ø 5 MM)

						
Ref	V0011	V0012	V0013	V0014	V0015	V0016
Height	2 mm	3 mm	4 mm	5 mm	6 mm	7 mm

IMPRESSION COPINGS

LABORATORY ANALOGS

			
	Open tray transfer	Closed tray transfer	Transfer Clipable
Ref	T0003	T0004	T0005
Height	13 mm	11.4 mm	10.75 mm

		
	Standard	Large
Ref	A0001	A0002
Height	12.3 mm	12.5 mm
Diam.	3.75 mm	5 mm

CEMENT RETAINED **PROSTHESIS**



Screw included
with all abutments

V0000

STRAIGHT ABUTMENTS

BRAT proposes a large range of straight abutments, standard, shoulder, narrow or anatomic abutments+

ANGULATED ABUTMENTS

- Platform switching is possible.
- Error-proof



STANDARD ABUTMENTS

STRAIGHT ABUTMENTS



Ref	P0001	P0002	P0003
Height	7.4 mm	9.1 mm	11.5 mm

SHOULDER ABUTMENTS



Ref	P0005	P0006	P0007	P0008
Shoulder	1 mm	2 mm	3 mm	4 mm
Height	8.5 mm	9.5 mm	10.5 mm	11.5 mm

SLIM ABUTMENTS



Ref	P0014	P0015
Height	5 mm	8 mm

ANATOMIC ABUTMENTS



Ref	P0016	P0017	P0018
Height	9 mm	10 mm	11 mm

ANGULATED **ABUTMENTS**

ANGULATED 15° ABUTMENTS



Ref	P0020	P0021
Height	9 mm	12 mm

ANGULATED 25° ABUTMENTS



Ref	P0030
Length	9 mm

ANATOMIC 15° ABUTMENTS



Ref	P0020	P0021	P0021	P0021
Shoulder	1 mm	2 mm	3 mm	4 mm
Height	9.5 mm	10.5 mm	11.5 mm	12.5 mm

ANATOMIC 25° ABUTMENTS



Ref	P0026	P0027	P0028	P0029
Shoulder	1 mm	2 mm	3 mm	4 mm
Height	9.5 mm	10.5 mm	11.5 mm	12.5 mm

SCREWED RETAINED **PROSTHESIS**



CASTABLE ABUTMENTS

Castable abutments made of machined residue-free POM. They provide high retention for waxes and resins, facilitate the waxing and ensure precise and stable connection.

MULTI-UNIT ABUTMENTS

Multi unit abutments for screw retained multiple implant restorations.



CASTABLE ABUTMENTS



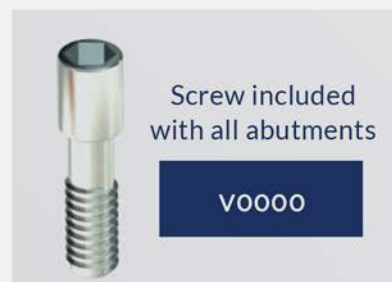
► UCLA HEX



► Castable Abutment non HEX



► Castable Abutment HEX



Screw included
with all abutments

V0000

Ref

P0039

P0040

P0041

STRAIGHT MULTI UNIT ABUTMENTS



P0042



P0043



P0044



P0045



Ref

P0042

P0043

P0044

P0045

Collar height

1 mm

2 mm

3 mm

4 mm

ACCESSORIES FOR MULTI UNIT



► PLASTIC SLEEVE



► TITANIUM SLEEVE



► MULTI UNIT SCREW



► IMPRESSION COPING



► ANALOG

Ref

P0046

P0047

P0048

P0049

P0050

REMOVABLE PROSTHESIS



BALL ATTACHMENTS

Ball attachment is connected by a click to the removable denture. The abutment is available in different heights selected according to the height of gums. Ball attachment is designed

with a titanium cap and silicon intermediate cap. It is designed for accurate joining of overdenture implants.



BALL ATTACHMENTS



Ref	P0033	P0034	P0035	P0036	P0037	P0038
Height	1 mm	2 mm	3 mm	4 mm	5 mm	6 mm

CAPS

METAL CAP FOR BALL ATTACHMENT

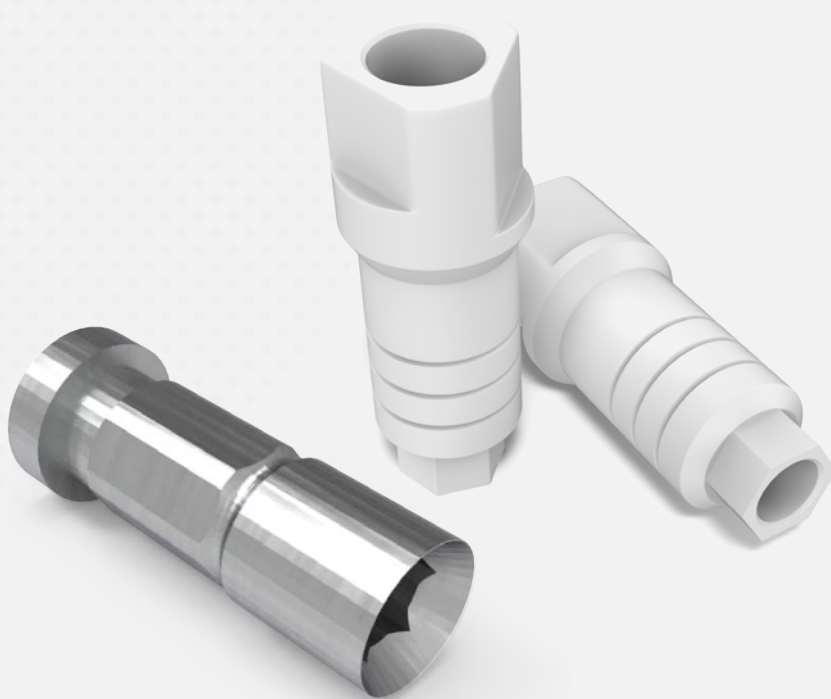


SILICON INTERNAL CAP



Ref	P0031	P0032
-----	-------	-------

DIGITAL **ACCESSORIES**



exocad

DIGITAL ACCESSORIES

CAD CAM EXOCAD LIBRARY

exocad

INTERNAL HEX 2.4



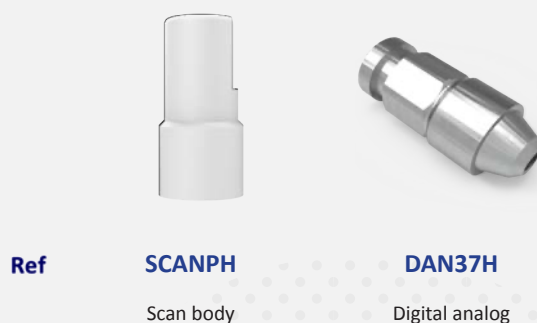
TI BASE ANGLED



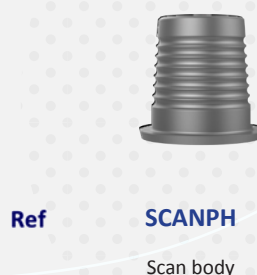
TI BASE



MULTI UNIT



TI BASE



IMPLANT MONO ONE



MONO ONE implant is specifically used in basal bone on upper and lower jaws and is designed for immediate prosthetic loading for crowns bridges and bar connectors.

The implant is on-piece implant having an RBM treated bone condensing thread, machined straight rigid collar and abutment.

The implant is cleared for immediate, non-occlusal provisionalization in single-tooth restorations.

Multiple-unit restoration should be splinted together. In appropriate clinical conditions MONO ONE implant may be loaded immediately.

Material : Titanium (Ti6Al4V ELI)

Treatment: RBM

MONO REFERENCES

Diam.	Ø 1 mm	Ø 2 mm	L mm	Réf
3,0	1,7	2,0	8	MO3008
			10	MO3010
			11,5	MO3011
			13	MO3013
			16	MO3016
3,3	1,7	2,0	8	MO3308
			10	MO3310
			11,5	MO3311
			13	MO3313
			16	MO3316
3,75	2,4	2,5	8	MO3708
			10	MO3710
			11,5	MO3711
			13	MO3713
			16	MO3716
4,2	2,9	2,8	8	MO4208
			10	MO4210
			11,5	MO4211
			13	MO4213
			16	MO4216
5,0	3,7	2,8	8	MO0508
			10	MO0510
			11,5	MO0511
			13	MO0513
			16	MO0516



MONO ONE COMPONENTS



DNM1
Drill
Ø 15 mm



DNM2
Motor Driver
Ø 2.15 mm



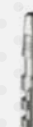
XNM1
Ratchet Driver
Ø 2.15 mm



XNM2
Motor Driver
Ø 2.15 mm



XNM3
Ratchet Driver
Ø 2.15 mm



TNM1
Analog



TNM2
Transfer



BONE TYPES

All bone types

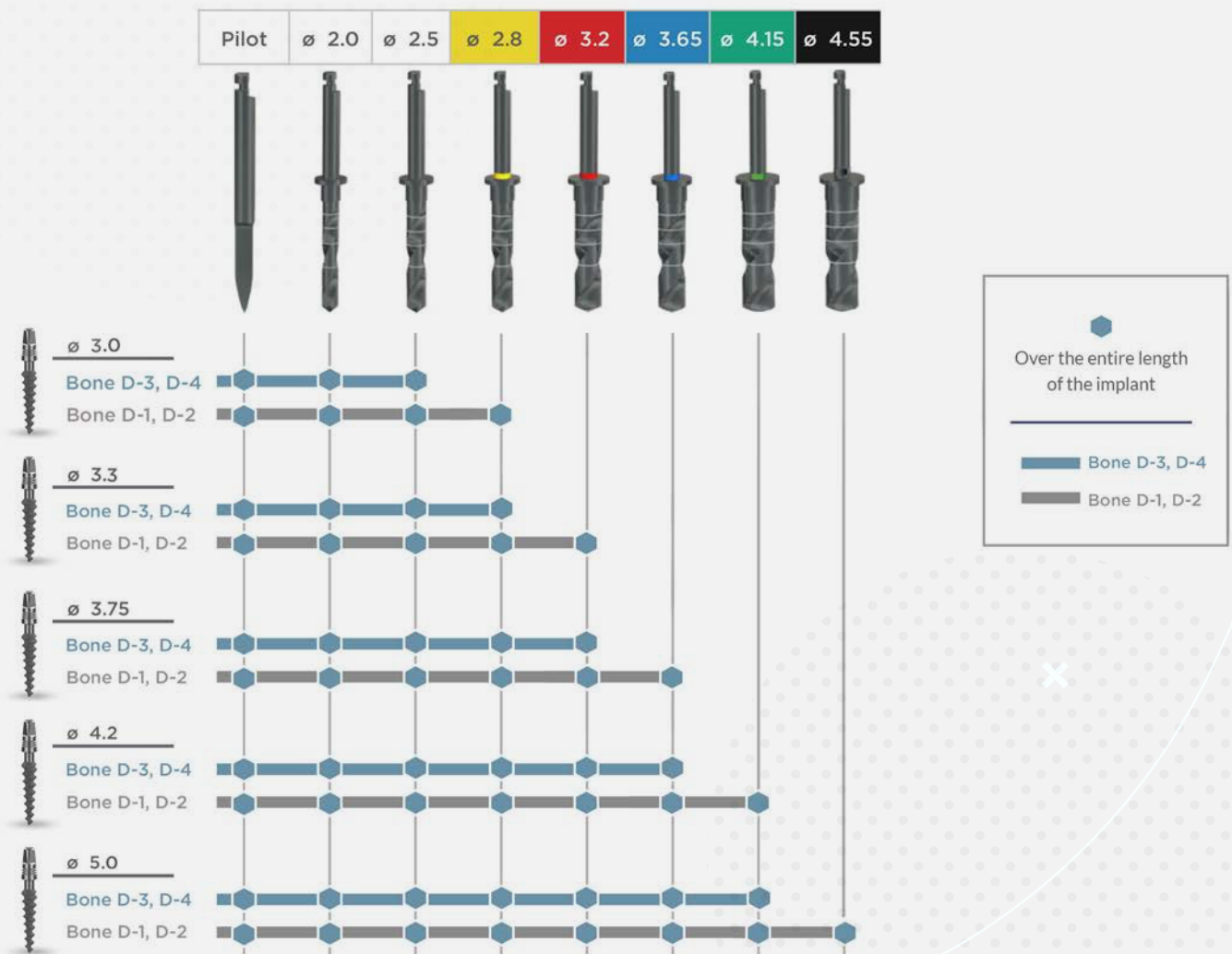
DESIGN FEATURES

Tapered thread and tapered core body
Cementable prosthetic

CLINICAL BENEFITS

Tissue level implant
Bone condensing
High primary stability
Minimal drilling
Immediate loading

DRILLING SEQUENCE



BRAT PRODUCTION





BRAT ACADEMICS

BRAT IMPLANTS organizes complete training courses in implantology, from simple to advanced surgeries.



It takes place beforehand university education and proposes a global vision of implantology to validate requirements for any advance and for university procedure. This education,



which is supervised by experimented clinician, broaches surgical, prosthetic, periodontal and occlusal aspects of edentulism (total or partial) treatment.

TRAINING OBJECTIVES

- To develop knowledge of oral rehabilitation techniques
- To propose solutions for every kind of edentulism problem
- To breath new life to daily practice
- To establish and maintain patient relationship

The training has the particularity to work for practitioner's independence by putting surgical and prosthetic phases of implantology treatment into practice. Implant treatment's essential themes are broached within a participants' small group. So, the training

manager is quite capable to answer the questions and the doubts of each one. The practical training is also primordial to secure first surgeries. Courses options are adaptable in accordance with your situation. Every course have an implantology's theoretical approach then an implantology's practical approach. This allows everyone to acquire a real clinical experience. The schedule is assessed according the students needs.

BRAT "EXPERTS" are also available to advise practioners and to discuss complex cases or complications before and after surgeries.

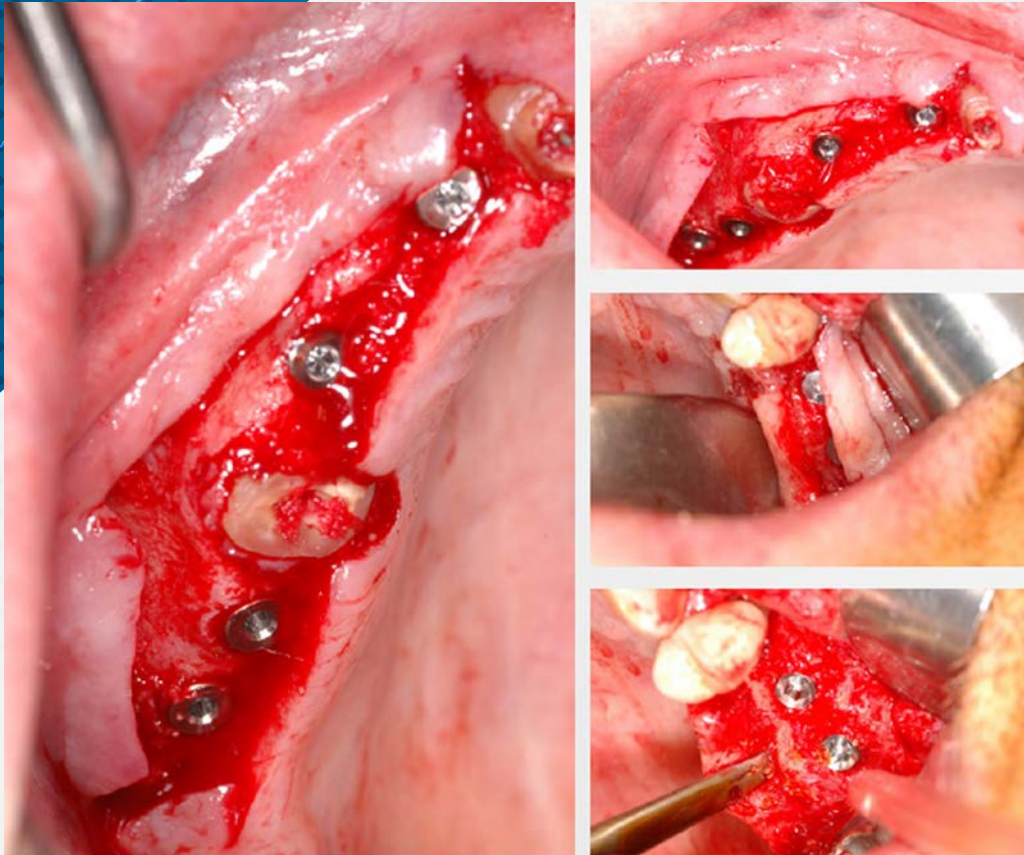
GET TRAIN BY OUR TEAM OF EXPERT SURGEONS !



BRAT IMPLANTS CLINICAL CASES

IMPLANTS CASES

Case 1



- Multiple upper maxillary implant Crestal Incision.

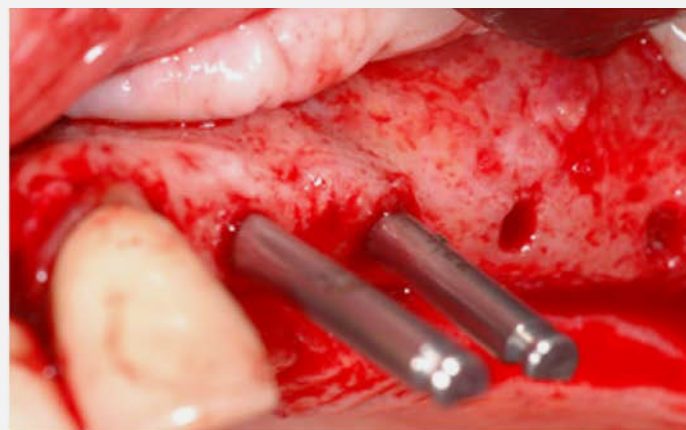
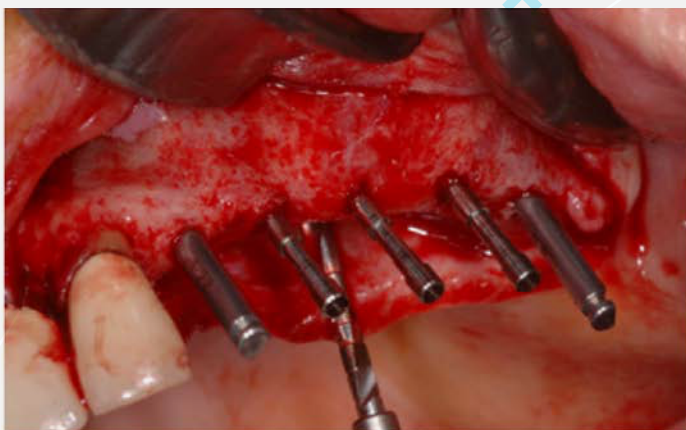
Case 2



- Implant bed drilling is an upper posterior maxillary bone after a sinus elevation

- Implant bed drilling in an upper posterior maxillary bone after a sinus elevation Implant Express placement

Case 3



- Multiple drilling upper maxillary
Note the parallelism of the implants (parallel pins)

IMMEDIATE LOADING CASES

Case 1



- Guides bone regeneration on teeth number 22 for labial surface of the important

SINUS LOADING CASES

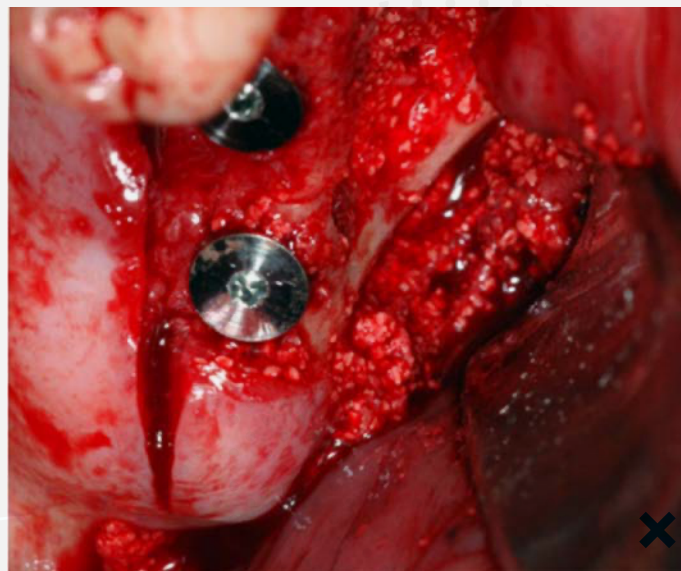
Case 1



- Implants placeme
Upper posterior maxillary area with simultaneous sinus floor

Case 2

- Implants placement
Upper posterior maxillary area with simulataneous sinus floor



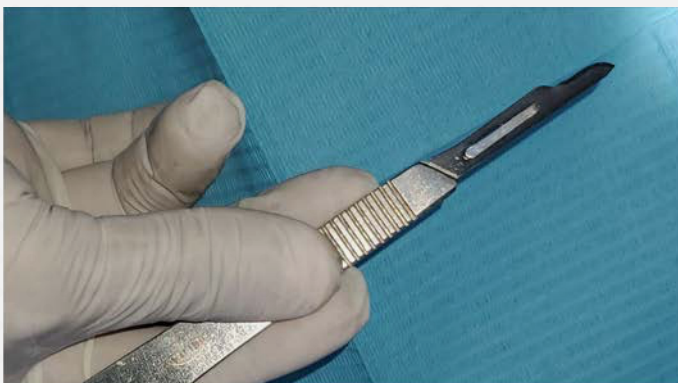
Case 3 : 11 implants in the upper lower jaw



• Before Operation



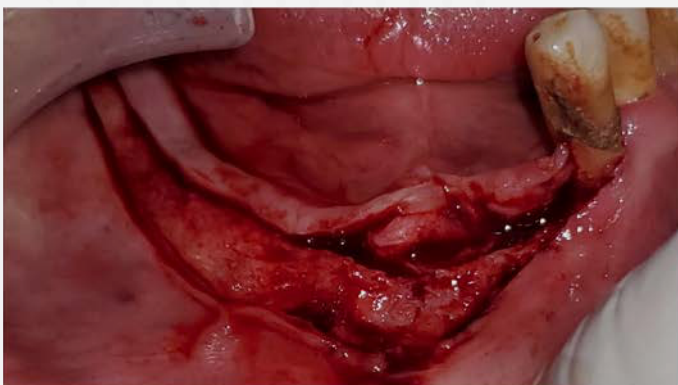
• Preparation



• Before operation, using 15 blade for incision



• Cristal incision flap



• Cristal incisional flap



• Using pointer of cortical drill



• Using the cortical drill just 3mm



• Using the cortical drill just 3mm



- Using the Pilot Drill 2mm with stopper



- Using the Pilot Drill 2mm with stopper



- Using the Pilot Drill 2mm with stopper



- Using the Pilot Drill 2mm with stopper



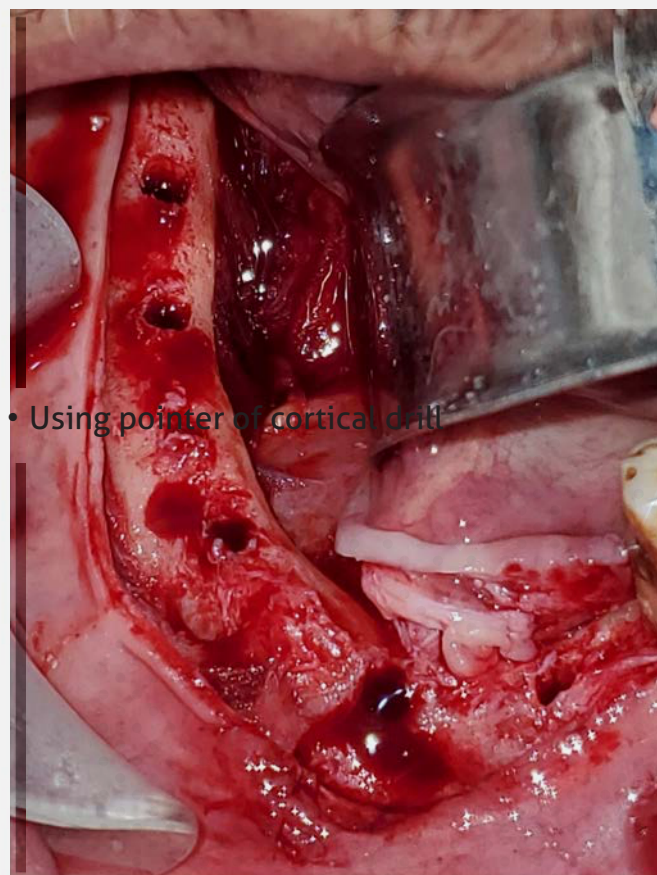
- Using the drill according to surgical protocol



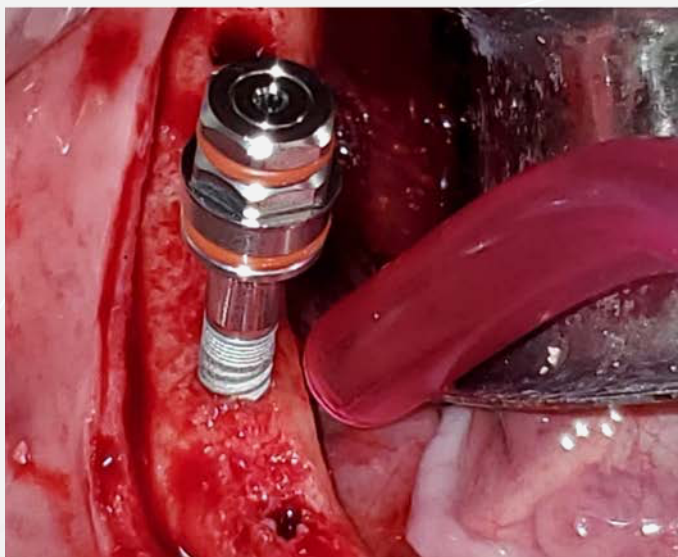
- Using pointer of cortical drill



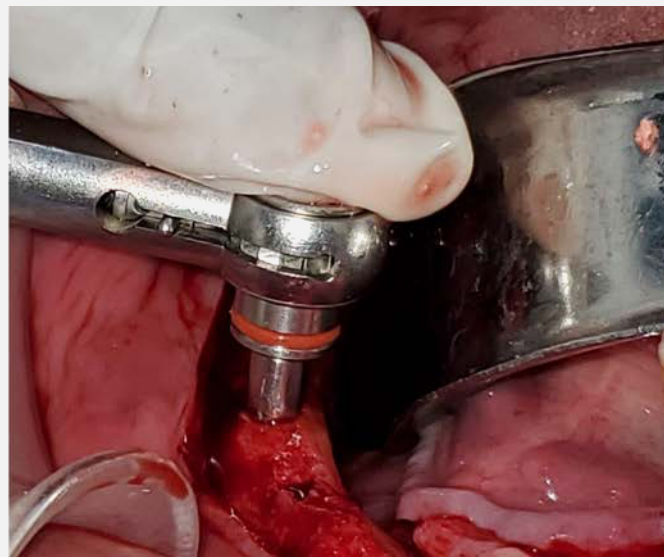
- Opening th implant



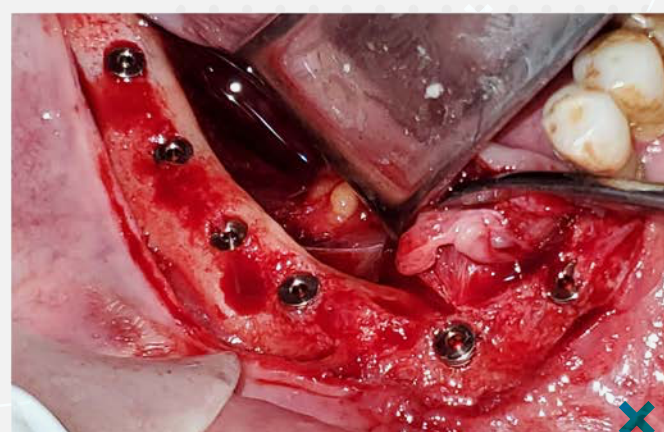
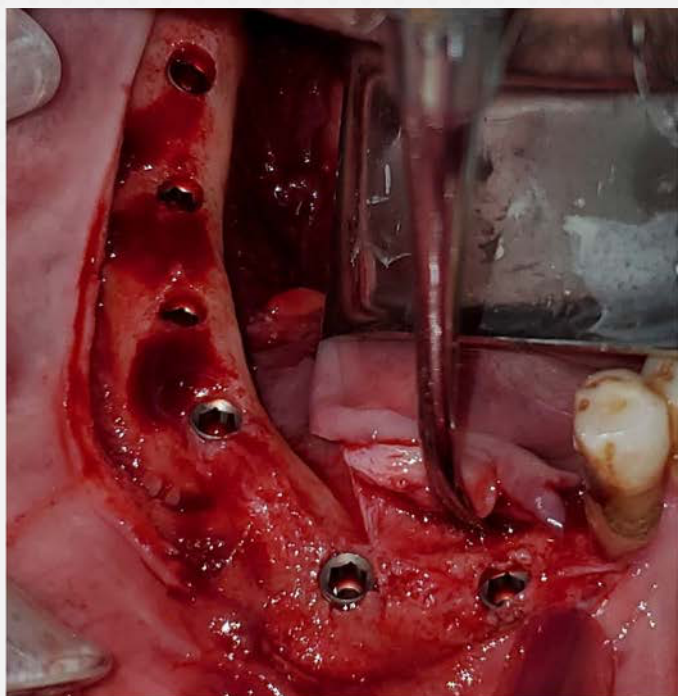
- Finishing the surgical beds



• Insertion the implant by holder manually



• Using the ratchet to insert the fixture



• Covering all the implants



- Suturing passively



- The same steps for upper jaw, and this is after the operation

Case 4 : Using the trephine drill system





Case 5 : The implant include bone formation



SURGEONS WORLDWIDE TESTIMONIALS

DR MORISON (USA)

“The Implant Express answers all current clinical demands.”

.....

DR PEREZ (MEXICO)

“The Implant Express optimizes all implant requirements.”

.....

DR NGUYEN (FRANCE)

“BRAT implant solution and its trephine drill are a great breakthrough in the field of implantology.”

.....

DR WILSON (UK)

“BRAT surgical Kit is very easy and complete / they offer two different drilling systems with a great innovation > a bone recover drill.”

.....

DR GIMENEZ (SPAIN)

“Implant Express placement is easy. This implant system can be used by surgeons of all levels.”



38 rue des Mathurins - 75008 PARIS - FRANCE
+ 33 (0) 6.28.25.23.99
contact@brat-implants.com

RESEARCH THROUGH INNOVATION

WWW.BRAT-IMPLANTS.COM